



## Northfield Prairie Partners Chapter Newsletter

### December 2020 Volume 9 issue 4



Monarda and Rudbeckia instead of mowed grass – a pollinator haven, thanks to hard work of Mairi Doerr. Photo by Mairi Doerr



Beehive at Wicklunds prairie. There is no end to the activities and projects Jerry takes on for the Wicklund Prairie! Photo by Jerry Wicklund



Beauty in Nature. Photo by Laura Teele



Banning State Park, Big Spring Falls. Holly met friends at State Parks, following pandemic safety procedures, to enjoy the summer. Photo by Holly Fisher



Indian grass (*Sorghastrum nutans*). Photo by Bruce Dybvik



Fungi and Ferns at Jay Cooke State Park. Photo by Carol



Burning the prairie -keeping it healthy. Photo by Gary Bullemer

"Miles of Susan"  
Photo by Arlene Kjar, from Dwayne Vosejka's farm.  
1<sup>st</sup> place award winner in scenery division in national Wild Ones competition



## Prairie Partners Chapter 2020 officers

President – Barb Bolan  
Vice President – Nancy Schumacher  
Secretary – Pat Johnson  
Treasurer – Jennifer Munnings  
Web Master – Jim Sipe  
Past President – Arlene Kjar  
Membership Chair – Alice Burmeister  
Newsletter Chair – Ann Dybvik

**Wild Ones Mission:** Native Plants, Natural Landscaping promote environmentally sound landscaping practices to preserve biodiversity through preservation, restoration, and establishment of native plant communities. Wild Ones is a not-for-profit environmental education and advocacy organization.

**Wild Ones National Address:** 2285 Butte des Morts Beach Road, Neenah, WI 54956  
[www.wildones.org](http://www.wildones.org)

**Membership:** Sign up online at [www.wildoneones.org/membership.html](http://www.wildoneones.org/membership.html) or by mail at above address. Cost is \$40 per year for a household membership. Student and other membership types also available.

**Northfield Prairie Partners Mission Statement:** To preserve, maintain and provide knowledge of native and restored plant communities in a way that fosters friendship.

**Northfield Prairie Partners online:**  
[www.northfield.wildones.org](http://www.northfield.wildones.org)  
[facebook.com/NorthfieldPrairiePartners/](https://facebook.com/NorthfieldPrairiePartners/)

## Newsletter Committee:

Lead: Ann Dybvik, Chief Photographer: Bruce Dybvik, Committee: Nancy Schumacher, Jim Sipe, Gary Bullemer, Barb Bolan

**How to submit articles for the newsletter –** We welcome stories about natural areas, a native garden you have visited or designed, a nature-based vacation, a special flower, bird, butterfly, etc. Please contact Ann Dybvik at [anndbvk@gmail.com](mailto:anndbvk@gmail.com) to discuss your ideas.

**Prairie Partners member local Services**  
(Please let us know if you have one to list)

**Minnesota Native Landscaping, INC:** Dwayne Vosejpk 651-214-2357

**Sogn Valley Farms:** Native plants, Organic Vegetables. Karin & Dana Jokela, 763-213-4341

**RBNC** –River Bend Nature Center, [www.rbnc.org](http://www.rbnc.org), Breanna Wheeler, 507-332-7151

**Halfpint Hollow Miniature Donkeys:** Rod and Sue White, 507-263-2716

**Northfield Prairie Partners Nature Crafts:**  
Arlene Kjar, 507-645-8903 (proceeds to Prairie Partners)

**Cannon Valley Herbals:** LuAnn Raadt  
<https://www.cannonvalleyherbals.com/>

**Goat Dispatch:** Jake Langeslag, Faribault 507-333-5959

**CRWD** – Cannon River Watershed Program:  
Paula Corsi at <https://crwp.net/>



## Notes from Prairie Partners President:

This issue is dedicated to our Prairie Partners members. It is so good to see some of the fun nature activities people were able to do in the year of the lockdowns. Whether you spent time in your own backyard retreat or at parks or nature areas, so many beautiful things to see and do. I cannot wait until we are back together again!

## 2021 Program Schedule

*Programs at Emmaus Church unless otherwise noted. Outside tour dates may change due to weather.*

**Jan 14, 7PM:** Zoom – Doug Tallamy’s video *Nature’s Best Hope*

**Feb 11, 7PM:** Zoom - *Butterflies of Northwoods* by Allison Barta

**March 11, 7PM:** Zoom Designing a native garden or prairie – Minnesota Native Landscaping, Bre Bauerly

**April 5, 6PM:** *Annual Dinner* - TBD

**April 30, 6PM:** *Spring ephemerals-* Nerstrand Park – Led by Katie Gillispie



Pasque Flowers a true spring ephemeral.  
Photo by Sue White

**May 14<sup>th</sup>:** *Jumping Worms* - Nancy Schumacher and the Wild Ones Jumping Worms focus group

**May 22 9AM -3PM:** *Plant Sale* – Nancy Schumacher

**June 10:** *Koester Prairie/Prairie Creek tour of early summer prairie flowers* – Dave Kuhnau or Craig Koester.

**June 12th:** *Park workday.*

**July 8 or 10-** *Native Planting yard tours and L2L yard tours*



Lupines at Lashbrook.  
Photo by Ken Kirton

**Aug 12, 6:30pm** – *River Bend Nature Center Prairie Tour* led by Breana Wheeler

**Aug 27, 10AM:** *Monarch Tagging* at Ney Nature Center – Bus trip

**Sep 9, 6PM:** *St. Olaf Natural lands Tour*

**Oct 14, 7PM:** Gary Bullemer – *MN Ducks and making duck decoys*; plus, deserts and appetizers potluck

**Nov 11, 7PM:** *Dragonflies* by Scott King

**Dec 9 -11AM:** *Lunch* at St. Olaf Buntrock Commons.



Rusty-patch Bumblebee. Photo by Arlene Kjar

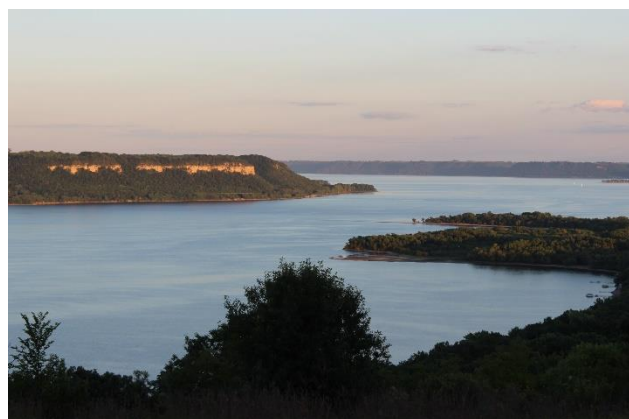
## October 2020: LuAnn Raadt, Cannon Valley Herbals. Via Zoom



Native Monarda or Bee Balm, used to provide sunburn relief and a favorite for pollinators

Herbalism, the medicinal or therapeutic use of plants, has been around for thousands of years. The first book, *The Classic Herbal*, was published in 2700BC in China. Herbals are intended to help balance and heal the body and support the immune system. LuAnn grows or collects her own plants for the products she markets, provides a pick-your-own service, and hosts classes in herbals. [cannonvalleyherbals.com](http://cannonvalleyherbals.com). LuAnn states that they do not replace Doctors or medical treatments.

## November 2020: *Decoding the Driftless* ([sustainabledriftless.org](http://sustainabledriftless.org))



Lake Pepin, Frontenac State Park is part of the Driftless Area. Photo by Gary Bullemer

The Driftless area, the land missed by glaciers, with its unique features and history, covers

parts of Minnesota, Iowa, Wisconsin, and Illinois.

The movie takes viewers through the Driftless area by air, by land across rugged landscapes, on and under the water, through a secret underworld, deep into caves and up steep cliffs, deciphering ancient clues of archaeology, paleontology, geology, and biology of the special region. It shows why this unique area, in the heart of America, and including part of Minnesota, is the only “island driftless region” in the world.

Our Northfield Prairie Partners Chapter has purchased this DVD and members are welcome to borrow it. I highly recommend it!



Whitewater Valley, Whitewater State Park, part of the Driftless area. A movie spoiler alert - look at how even the heights of the bluffs are in the photo. Photo by Gary Bullemer, taken from the Elba Fire Tower, looking down on the valley – a tower to climb only if you like heights, according to Gary.

Beaver Dam. Photo by Jerry Wicklund, from his farm near Northfield





## Lawns to Legumes Program (L2L)

Bill Jokela and Mary Jane Lipinski participated in the new *Lawns to Legumes* Program offered by Minnesota designed to encourage people to transition lawns to native plantings that attract more pollinators and wildlife. They spent plenty of 2020 isolation time designing their project, working up a patch of lawn and transplanting native plant seedlings. Hopefully, we will be able to tour some of these yards during 2021.



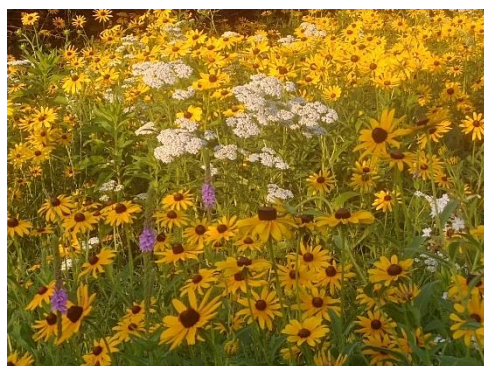
Planting complete for 2020. Ready for 2021 flowers and pollinators. Photo by Bill Jokela



Bill mowed down the lawn, tilled it up and began planting his native plants



Bill Jokela planting the native plants in his Lawns to Legumes garden.



A native plant wildflower garden. By Mairi Doerr



I always encourage native gardeners to incorporate "features" to help make the garden look intentional (less messy). By Nancy Schumacher



Partridge Pea, a possible addition to the Bee Lawn Mix. Photo by Norma Gilbertson, a Lawns to Legumes participant



Brown-eyed Susans, Rudbeckia. Photo by Sue White



Prairie Smoke Geum. Photo by Sue White



Penstemon. Photo by Sue White



## December 19, 2020: Feeder watch Bird Count – open to all to join in!

This year for our December-can't-meet-in - person activity, we are planning do a Bird Count. We will follow the Audubon Christmas Bird Count rules (121<sup>st</sup> year) and your results may be applied to both our count and the official one, provided you are within an official circle that is doing the count on the 19<sup>th</sup>. Rules are easy – just count what you see at your feeder, in your yard, overhead, or even in view on your lake. I will send out forms. You can do it for as long or short of a time as you wish.



Female Cardinal and Purple Finch sharing a feeder. Photo by Arlene Kjar



Pine Siskins at the feeder. More species are coming south this year due to the "irruption". Droughts, fires, and pests caused a shortage in production of pinecones up north so several more species birds head south for food. Photo by Pat Johnson, in her yard



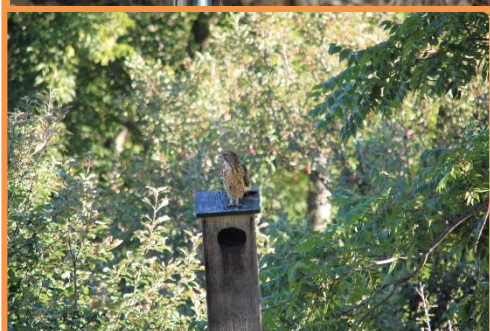
Male Pileated Woodpecker. Photo by Gary Bullemer



Never know what will stop by for a nap at your feeders. Photo by Nancy Schumacher



Evening Grosbeaks are part of the 2020 bird irruption and may show up at local feeders this winter to dine on sunflower, safflower, or other seeds. Photo by Barb Bolan, Sax-Zim Bog



Popular housing - Wood Duck box appeals to Wood Ducks (upper left), Pileated Woodpecker (upper Right), Broad-winged Hawk (lower left), Screech Owl (lower right). By George Watson



Male Rose-breasted Grosbeak. Photo by Gary Bullemer at Sibley State Park



**Some days were perfect for exploring parks and nature further from home.**



Hawk Ridge, Duluth, draws people from around the country and beyond to observe hawks and owls during fall migration, to the tune of 76,000 raptors a season. They skirt around Lake Superior and pass over Hawk Ridge. Photo by Carol Trosset

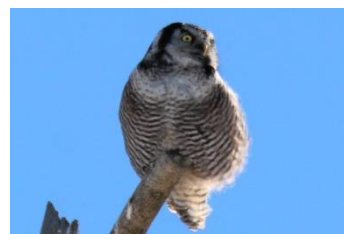


Hidden Lake at Lake Carlos State Park. A favorite of Arlene's family and an annual get together spot for them. Photo by Arlene Kjar



Who lives here? Banning State Park. Photo by Holly Fisher

Boreal Owl  
at Sax Zim  
Bog. Photo  
by Carol  
Trosset



Hawk Owl, Sax-Zim Bog. Photo by Barb Bolan

Katie Monarch trip  
to El Rosario  
Monarch Sanctuary,  
at 12000 feet  
elevation. El  
Rosario is one of  
several colonies  
within the Monarch  
Butterfly Biosphere  
Reserve, a World  
heritage Site. From  
Katie Gillispie



Oak Savannah at Sibley State Park. Photo by Gary Bullemer



**Native Gardens and prairies provide beauty, food and habitat for pollinators and other wildlife, but need invasive species controlled, whether by goats or by hand.**



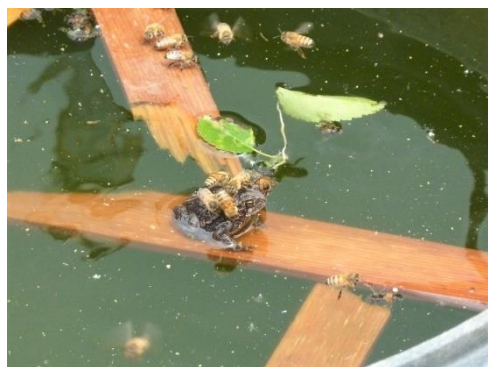
This is the "seed garden" where I grow large numbers of a given species for the purpose of seed collection. This patch of butterfly weed produced wonderfully for about 5 years before declining. I have since planted a new patch. We have been lucky to have nesting bluebirds in the birdhouse most years. Needless to say, a favorite spot for me. Nancy Schumacher



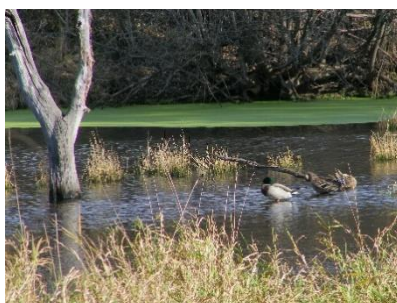
Jennifer and Bill used goats from Goat Dispatch to help control invasives in their native plantings. Photo by Jennifer Cox Johnson



Goats are fun to watch, whether in a pandemic induced isolation or not. Jennifer and Bill out enjoying a cool day watching goats eat and play and getting their prairie cleaned up. Photo from Jennifer Cox Johnson



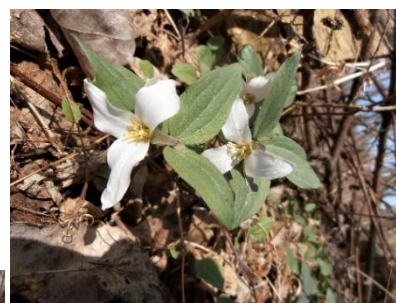
I always keep a couple of tubs of water in and around the green house so that I can easily scoop with a small watering for spot watering. The honeybees were always attracted to these and some would drown (or perhaps die for other reasons) so I took to floating pieces of wood in the tubs. Helped immensely in reducing bee deaths. A couple of times I saw bees on a toad and was fascinated. By Nancy Schumacher



Mallards at Hauberg Woods. Photo by Arlene Kjar



Coneflowers and Sedum in Sue White's yard. Photo by Sue White



Trillium nivale at Lashbrook Park. Photo by Ken Kirton



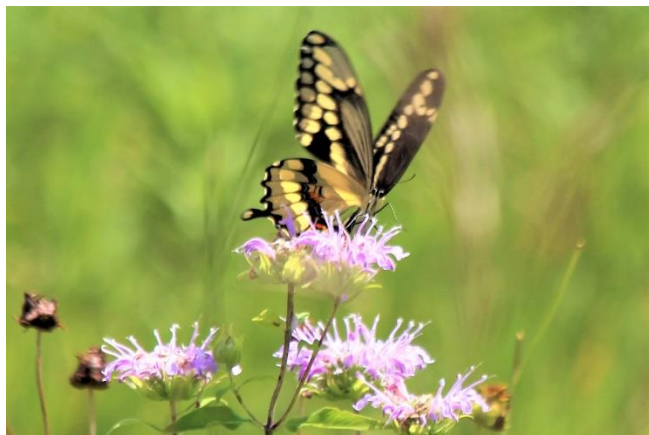
Pasque flowers at Lashbrook Park. Photo by Ken Kirton



Differential Grasshopper. Photo by Norma Gilbertson



## Watching Butterflies, a surefire way to bring a smile to your face.



Giant Swallowtail on Monarda in prairie planting, Hampton, MN.  
Photo by Barb Bolan



Painted Ladies on Liatris, Lashbrook Park. Liatris is a huge magnet for butterflies. Photo by Bruce Dybvik



Monarchs on Liatris ligulistylis (Meadow Blazing Star). "If you plant it, they will come."  
Photo by Nancy Schumacher



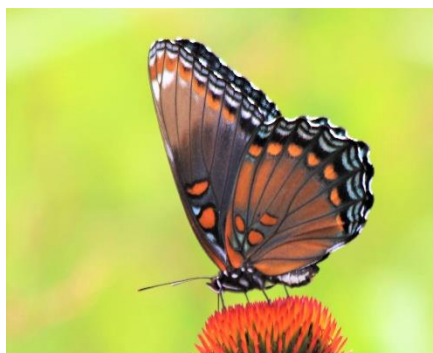
Viceroy



Buckeye



Black Swallowtail on Coneflowers.  
Photo by George Watson



Two sides of a Red Spotted Purple. Photos by Barb Bolan, in garden



Black Swallowtail caterpillars. Photo by Arlene Kjar



## So much to see on nature hikes!



Nature Art. Banning State Park. Photo by Holly Fisher



Marasmius. Photo by Laura Teele



Dryad's Saddle. Photo by Laura Teele



Chicken Fat Mushroom *Suillus americanus*. Photo by Laura Teele



Fungi. Photo by Laura Teele



White Tail Buck at Sibley State Park. Photo by Gary Bullemer



Leopard Frog at Jay Cooke State Park. Photo by Carol Trosset



Garter Snake at Carlos State Park. Photo by Arlene Kjar



## Some local sources of native seeds

**Our Prairie Partners Plant Sale:** May 22, 2020,  
Emmaus Church Parking Lot

**Sogn Valley Farms:** through their sales or at St.  
Paul Farmers Market. [Sognvalleyfarm.com](http://Sognvalleyfarm.com)

**Blazing Star Gardens:** 4003 Crane Creek Rd  
Owatonna, MN 55060. Sells at Souba  
Greenhouse and online.  
<https://blazingstargardens.com/>

**Minnesota Native Landscapes:** 8740 77th St  
NE Otsego, MN  
<https://mnnativelandscapes.com/>

**Outback Nursery** (good source of native woody  
species): 15280 100<sup>th</sup> St S, Hastings, MN  
<http://www.outbacknursery.com/>

**South Cedar Greenhouse:** 23111 Cedar Ave,  
Farmington, MN

**Prairie Moon:** (mail order only)  
<http://www.prairiemoon.com/>

**Prairie Restorations:** 31646 128th St  
Princeton, MN 55371  
<http://www.prairieresto.com/>



October 2020 Snowstorm surprise.  
So pretty. So early. Photo by  
Jennifer Cox Johnson

## Need to identify your native plant, bird, insect, tree...?

Here are some options to check out but more are out there too. And remember we have several members that can help, especially with native plants.

### Website:

**MinnesotaWildflowers.info** – This is a valuable source for information and detail on native plants.

**Apps to help ID plants** (always verify, apps are excellent for suggesting answer):

*iNaturalist* is excellent for plants, trees, birds, insects.... Take or pull up your photo, with location turned on, and the App will make suggestions for what it could be and if it has been seen in the area. The app is supported by citizen scientist experts that can also give you feedback on your sighting.

Here are a few more App options (not a complete list, highly recommended by others): PictureThis, PlantNet, PlantSnap, Flora Incognita, and Plantix (a crop Dr. – what is wrong with my plants)



Pasque Flower. Photo by Gary  
Bullemer



Return Address:

Barb Bolan

9700 Baldwin Ave Northfield, MN 55057

Address Label



Rice Moon (Ojibway) also known as the Corn Moon. September 2, 2020 over Lake Byllesby. Rice moons are brilliant white full moons in September. The harvest of wild rice by the Ojibway starts with the Rice moon. Photo by Mairi Doerr

**How better to bid adieu to 2020 than by watching the moon. 2021 is almost here.**



Falling Leaves Moon (Ojibwe term) or Harvest Moon over Lake Byllesby 1st of 2 full moons in October 2020. A Harvest Moon is the full moon occurring closest to the Fall equinox. It typically shows up in September 2020 found it in October. Some call the first autumn full moon (as this is) a Blood Moon or Dying Grass Moon or Travel Moon. Photo by Mairi Doerr

Blue Moon on Halloween 2020. 2nd Full moon in a month is called a Blue Moon. It is rare (once every 1.5 years) to have 2 full moons in a month, hence the saying "once in a blue moon". This one was even more rare – all US time zones had a Blue Moon on Halloween for the first time since 1944. Photo by Andrea Bolan



**We look forward to spring that is but a few months away with all its fresh beauty!**



Monarchs and Zinnias. Photo by Sue White



Liatris.... Photo by Jerry Wicklund



(L to R) Wood Lilies, Showy Lady Slippers and Yellow Lady Slippers. Photos by Gary Bullemer



Asteraceae. Photo by Norma Gilbertson



Virginia Bluebells. Photo and flowers by Laura Teele



Hillside wildflower prairie. Photo and garden by Mairi Doerr