



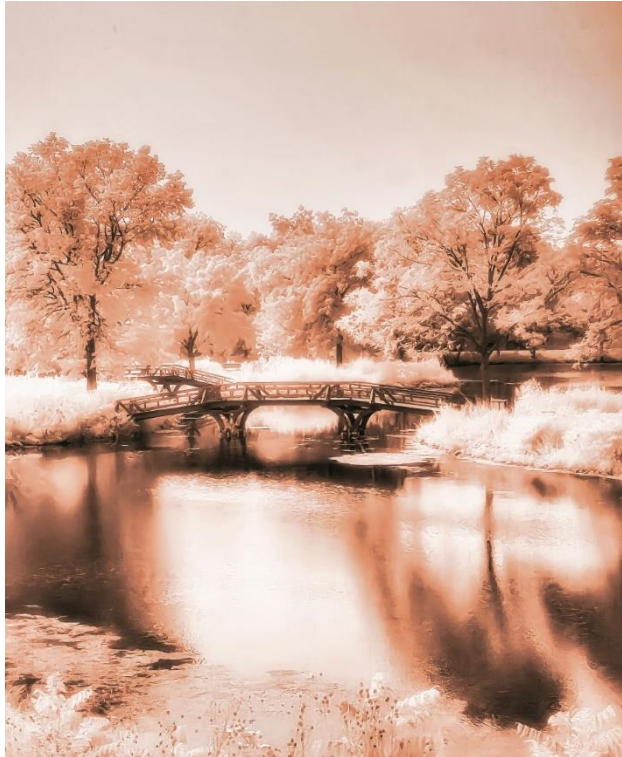
Northfield Prairie Partners Chapter Newsletter December 2021 Volume 10 issue 3



Prairie Smoke in bloom. By
Judith Bechtum



Wood Sorrel. By Norma
Gilbertson



Graceful – Carleton footbridge over Lyman Lake. By Gail Gates



Dancing Trout Lily. By Gail
Gates



Flowering Purple
Milkweed. Photo by Gary
Bullemer



Pink Lady Slipper MN. Photo by Mairi Doerr



Showy Lady slippers at her place. By Jennifer Cox-Johnson

Prairie Partners Chapter 2022 officers

President – Barb Bolan
 Vice President – Nancy Schumacher
 Secretary – Pat Johnson
 Treasurer – Jim Sipe
 Webmaster – Jim Sipe
 Membership Chair – Alice Burmeister
 Newsletter Chair – Ann Dybvik

Thank you so much, Jennifer Munnings for your 3 years of service as Treasurer!!

Wild Ones Mission: Native Plants, Natural Landscaping promote environmentally sound landscaping practices to preserve biodiversity through preservation, restoration and establishment of native plant communities. Wild Ones is a not-for-profit environmental education and advocacy organization.

Wild Ones National Address: 2285 Butte des Morts Beach Road, Neenah, WI 54956
www.wildones.org

Membership: Renew or join online at www.wildoneones.org/membership.html or by mail at above address. Household (family) memberships are \$40 year. Student and other membership types also available.

Northfield Prairie Partners Mission Statement: To preserve, maintain and provide knowledge of native and restored plant communities in a way that fosters friendship.

Northfield Prairie Partners online:

www.northfield.wildones.org

facebook.com/NorthfieldPrairiePartners/

Newsletter Committee:

Lead: Ann Dybvik, Chief Photographer: Bruce Dybvik, Committee: Nancy Schumacher, Jim Sipe, Gary Bullemer, Barb Bolan

Submitting articles for the newsletter – We welcome stories about natural areas, a native garden you have visited or designed, a nature-based vacation, a special flower, bird, butterfly, etc. Please contact Ann Dybvik at anndbvk@gmail.com to discuss your ideas.

Prairie Partners member local Services

(Please let us know if you have one to list)

Minnesota Native Landscapes (MNL), INC:

Dwayne Vosejпка 651-214-2357

RBNC –River Bend Nature Center,

www.rbnc.org, Breanna Wheeler, 507-332-7151

Halfpint Hollow Miniature Donkeys:

Rod and Sue White, 507-263-2716

Goat Dispatch: Jake Langeslag, Faribault 507-333-5959

CRWD – Cannon River Watershed Program:

Paula Corsi at <https://crwp.net/>

Notes from Prairie Partners President

by Barb Bolan

Thank you all for a fun, though not quite back to normal, year! It's so good to see everyone's flexibility and tolerance as we've had to reschedule or change programs, dates and locations. And thank you so much to all who contributed to this Member's special edition of our newsletter. I love seeing and hearing about what you've been doing all year.

2022 planned Chapter Programs –

PLEASE NOTE: tour dates are subject to change.

Jan 13, 2022: “Mushrooms: Delicious, Deadly and Fascinating!” By Laura Teele, via Zoom

Feb 10 “Landscaping with Native Plants”, by Cheryl Culbreth video, via Zoom, with Cheryl in attendance to answer questions

March 10 “Birding basics”, by Barb Bolan via Zoom or at church

April 28 – Ephemerals tour– Cannon River Park – led by Janet Petri. Date subject to changed based on weather and season

May 21– Plant Sale – Emmaus Church Parking Lot – Nancy Schumacher

June 9 – “What’s coming up in my native garden? Identifying seedlings” – Nancy Schumacher – garden tour

June 16 – Koester Prairie tour – Dave Kuhnau

July 14- Lashbrook Park – Ken Kirton

Aug 11 Bus trip – Whitewater State Park Native garden, tour led by Joel Dunnette

Sep 8 – Dakota County White-tail Park

Oct 13– Fall and winter trees – Breanna Wheeler – Hauburg Woods or in church

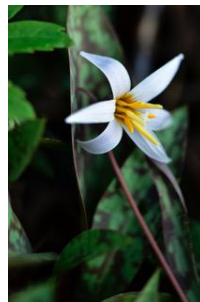
Nov 10 – Ducks and Duck decoys, by Gary Bullemer. Emmaus Church

Dec 8 - 11:30AM Lunch at St Olaf, Buntrock Commons

December - Nature watching where you are.



“After the rain.” By Laura Teele



Trout Lily. By Gail Gates



2021 Plant Sale



Maple tree on fire. By Arlene Kjar



Gull Carving by Gary Bullemer



Snowy Owl, Rice County. By Barb Bolan



Honey Mushroom found in NE Iowa. By Judith Bechtum



Inky cap mushroom in NE Iowa. By Judith Bechtum



Indian Pipe. By Laura Teele



Treasure found on a log at Sabbaday Falls, NJ. Bracket Fungi. Photo by Sue White



Shaggy Mane found in NE Iowa. By Judith Bechtum



Styptic Panus. By Laura Teele



"After the rain." By Laura Teele



Turkey tail. Northfield, MN. By Cora Scholz



Dryad's Saddle. By Barb Bolan



Grandson Dominic enjoying Lake Michigan. By Jennifer Cox-Johnson



Odin, Judith's young neighbor, has fun exploring nature at her place. By Judith Bechtum



Grandson Link entertains himself with Dandelion fluff. Link loves nature and even says "Hello" to his favorite trees. By Gail Gates



Volunteer cleaning one of the 100 Wood Duck houses at the Wicklunds. By Jerry Wicklund

May we raise children who love the unloved things - the dandelion, the worms & spiderlings. Children who sense the rose needs the thorn & run into rainswept days the same way they turn towards sun... And when they're grown & someone has to speak for those who have no voice may they draw upon that wilder bond, those days of tending tender things and be the ones. ~ Nicolette Sowder wilderchild.com



Disabled Turkey hunter getting a chance to be in nature thanks to Jerry and Audrey. With 110 acres in native prairie, trees, shrubs, ponds, and food plots, wildlife are plentiful. With volunteers, they have planted 1000 Oak trees and 200 fruit trees for wildlife. By Jerry Wicklund



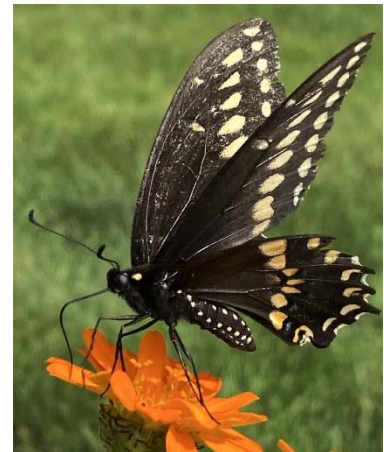
Rod relaxing on the bridge at Sabbaday Falls, New Hampshire, in the White Mountain National Forest. By Sue White



Monarch Caterpillar. By Polly Hendee



Black Swallow-tail caterpillar. By Polly Hendee



Male Black-swallowtail. By Polly Hendee



Viceroy – note the black band on the lower wings. Viceroy's are also smaller than Monarchs. By Polly Hendee.



Monarch. By Gail Gates



Tiger Swallowtail. Named for the 'tiger' strips on the wings. By Jerry Wicklund



Hickory Hairstreak – "Fanciful Beauty". By Arlene Kjar



A little Summer Azure. By Barb Bolan



Great Spangled Fritillary, Hampton MN prairie. By Barb Bolan



Edward's Hairstreak. By Arlene Kjar

What is a Butterfly Garden without Butterflies? - Roy Rogers



Black Swallowtail caterpillar. By Judith Bechtum



"Where's my mom?" Fox kit in Menomonie, WI prairie. (Note wood tick in its ear.) By Cheryl Jones



Gray Squirrel asking for the bird feeders to be filled. By Cheryl Jones



Fawn in prairie. By Ken Kirton



Bald Eagle Fishing on Straight River RBNC. By Cheryl Jones



Tree Frog. By Jennifer Cox-Johnson



Mallard Nest by Rainy Lake, Mallard Island. By Mairi Doerr



"A Blue Jay was here." Blue Jays have a huge repertoire of sounds and can mimic other birds and sometimes even mimic cats or other animals. By Holly Fischer



Baby bluebirds. Bluebirds were scarce in 2021 due to ice storms in the south US during spring migration. Hope they rebound in 2022. By Judith Bechtum



Nelson's Sparrow. Distinguish from LeConte's by the unstreaked gray nape. Migrates through in very low numbers. By Barb Bolan



LeConte's Sparrow. Carleton Arb. A migrant not often seen as it passes through each fall. By Barb Bolan



Wrens, hungry and crowded, in Bird house. By Cheryl Jones



Brown-belted Bumblebee, at Bethel Lutheran Church. By Alice Burmeister



Brown-belted Bumblebee hitting the milkweed. By Norma Gilbertson



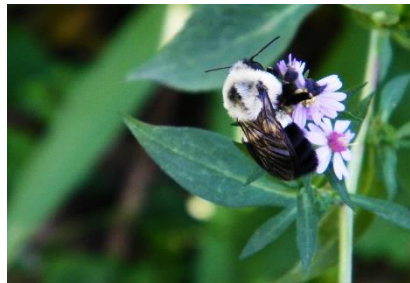
Golden Northern Bumblebee on a native thistle, Hampton, Mn. By Barb Bolan



Rusty-patched Bumblebee, Northfield yard. By Arlene Kjar



Tri-colored Bumblebee. Park Rapids, MN. By Alan, submitted by Sue White



Common Eastern Bumblebee on Asters in her yard. By Arlene Kjar



Red-belted Bumblebee on Rudbeckia, Hampton, MN prairie. By Barb Bolan



Garden Spider – ready to feast on insects. By Judith Bechtum



Tranverse Flowerfly at Meadow's Park, Northfield. By Polly Hendee



Two-spotted Bumblebee, one of our common bees. By Barb Bolan



Black and Gold Bumblebee. A big and beautiful bee! By Barb Bolan



Half-black Bumblebee female (note pollen bag). Common in the area. By Barb Bolan



Tettegouche State Park in Northeastern, MN. Beautiful place to visit.
By Sue White



Mother Nature's brings out her red paint.
Schoolcraft State Park, MN. By Holly Fischer



Maple ablaze. Beauty of Minnesota fall. By Bruce Dybvik



Entrance to Sabbaday Falls, New Hampshire, just off the scenic Kancamagus Highway. By Sue White



A beaver dam on the 110-acre Wicklund farm. In April 2021, they put the land in the Dakota County Perpetual Conservation Easement program to keep it forever natural. Contact Jerry if you'd like to visit. By Jerry Wicklund



Fall Colors and autumn woods in Falls Creek Faribault. By Cheryl Jones



Hepatica bloom. By Gail Gates



Bunchberry by Mairi Doerr



Hepatica and a little ducky. Holly found the duck lost on the trail at Nerstrand State Park so placed it by the Hepatica in hopes the owner would find the duck and enjoy the flower. By Holly Fischer



Dutchman's Breeches. Cannon Falls. By Barb Bolan



Prairie Smoke. By Judith Bechtum



Columbine. By Gail Gates



Marsh Marigolds at Nerstrand State Park. By Bruce Dybvik



Hepatica and Bloodroot in bloom at Afton State Park. By Mairi Doerr



Late Spring garden - Trillium grandiflorum, Woodland Phlox and Columbine. By Laura Teele



Native dwarf Iris in Laura's Garden. By Laura Teele



Purple Prairie Clover. By Judith Bechtum



Michigan Lily. By Gary Bullemer



Bottle Gentian at St Olaf Natural Lands. By Arlene Kjar



Wild Plum. By Ken Kirton



Beggars Ticks (*Bidens cernua*), by beach in local park at Frontenac, MN. By Norma Gilbertson



Red Currants and Cherries. By Sue White



Budding Coneflower. By Judith Bechtum



Stiff Goldenrod. By Arlene Kjar



Sky blue Asters at Spring Creek Park. By Norma Gilbertson



Prairie Burn at the Wicklunds. Jerry and his volunteers spend countless hours each year preserving and maintaining their natural prairies and wildlife habitats. By Jerry Wicklund



Glaucous White Lettuce (*Prenanthes racemosa*) By Jerry Wicklund

Return Address:

Barb Bolan

9700 Baldwin Ave Northfield, MN 55057

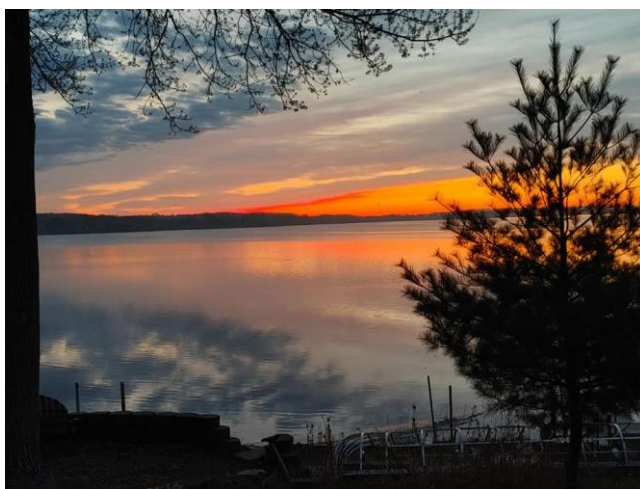
Address Label



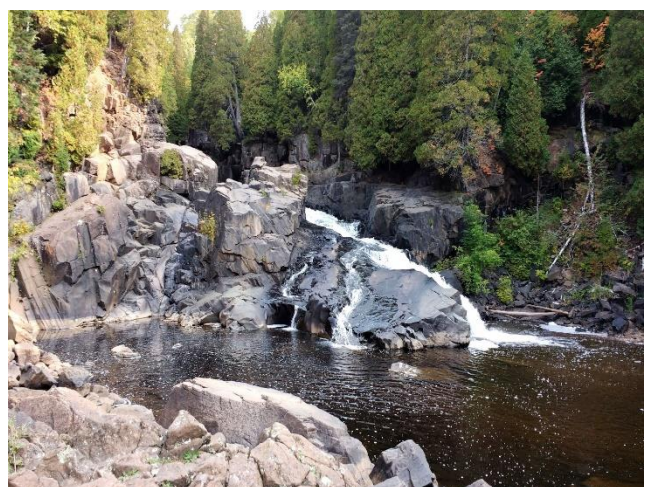
Hidden Falls. Such artistic beauty. By Gail Gates



Beautiful and serene sunset over their home prairie. By Jennifer Cox-Johnson



Morning's first light over Lake Byllesby. What an amazing view to wake up to each morning! By Mairi Doerr



Peaceful beauty at Minnesota's Tettagouche Park. Tettagouche, on the North Shore, is known for its waterfalls, wildlife, trails, and rock climbing. By Sue White